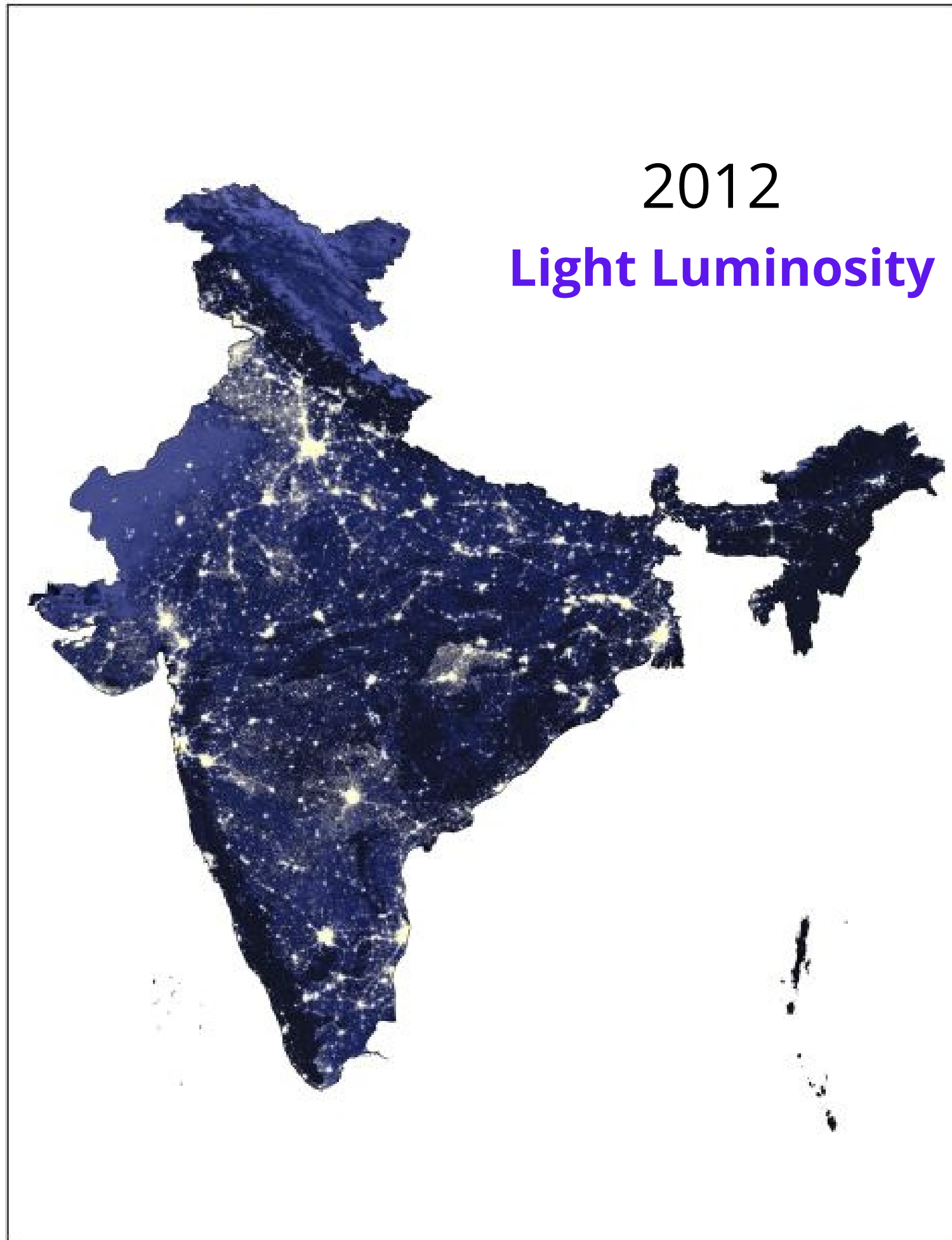


2012-2021

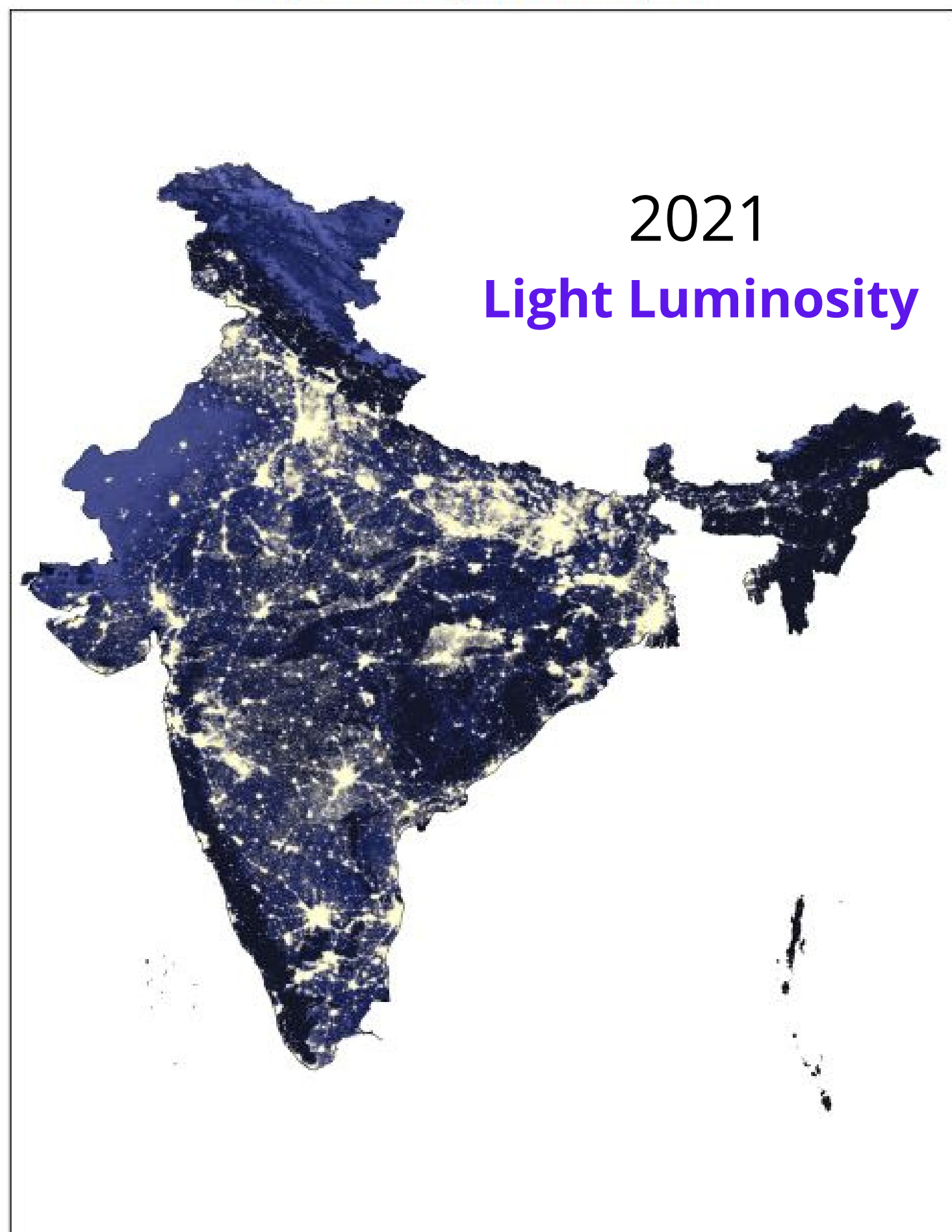
**INDIA'S
DEVELOPMENT
THROUGH
IMAGES**

Figure 1A: India Night-time Luminosity, 2012



Source: NASA, MapmyIndia

Figure 1B: India Night time Luminosity 2021



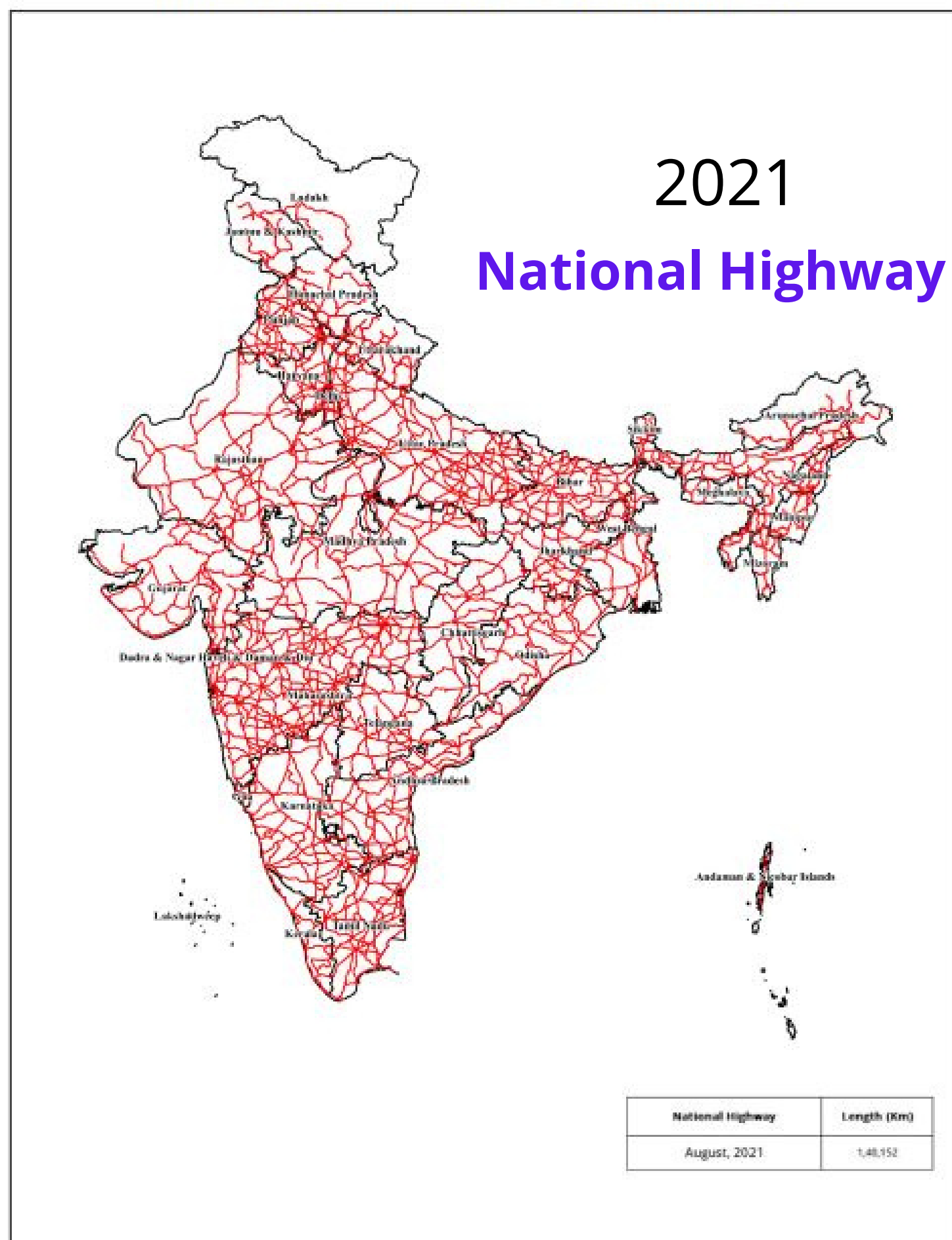
Source: NASA, MapmyIndia

Figure 2A: India's National Highway Network (As of August 2011)



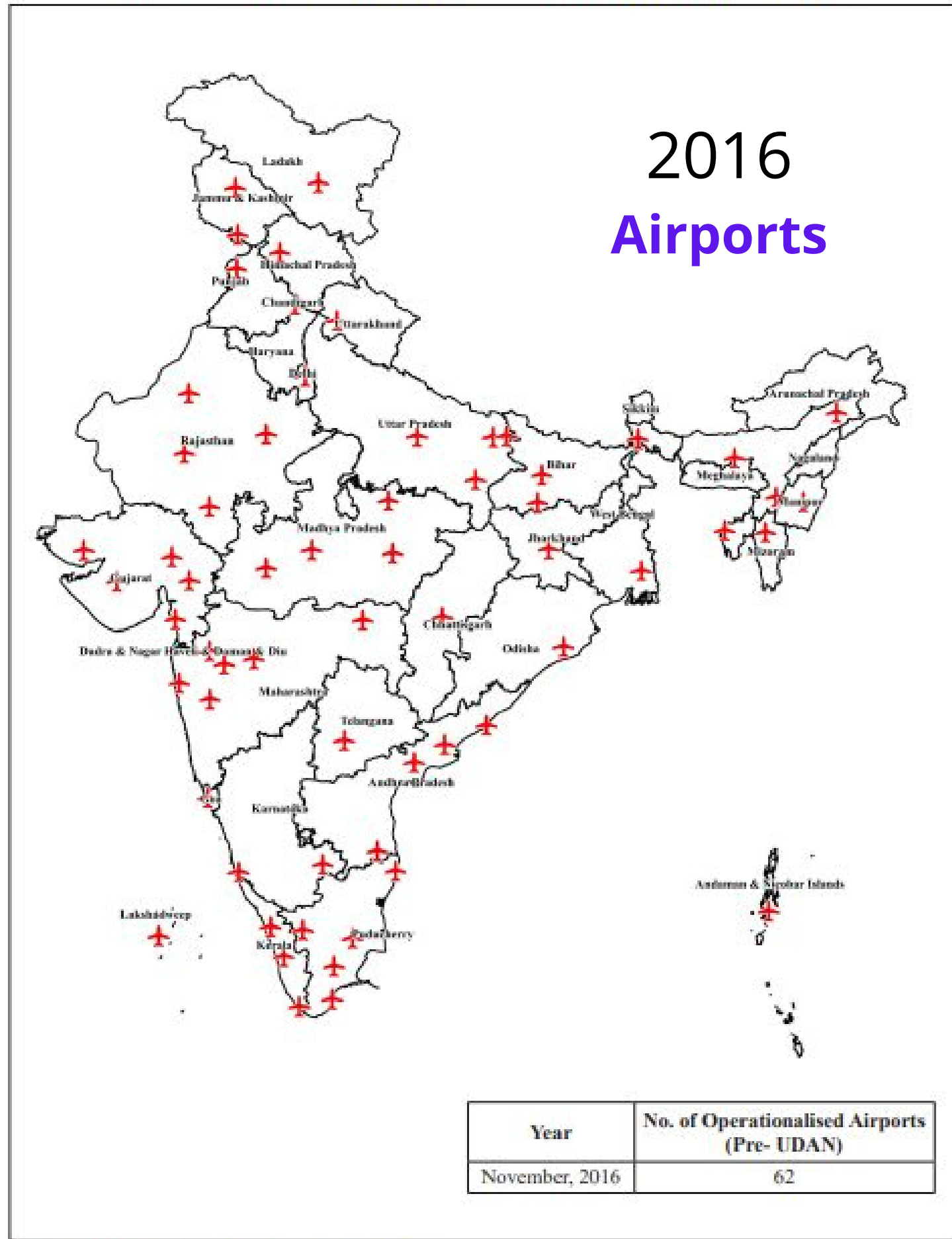
Source: Ministry of Road Transport and Highways, MapmyIndia

Figure 2B: India's National Highway Network (As of August 2021)



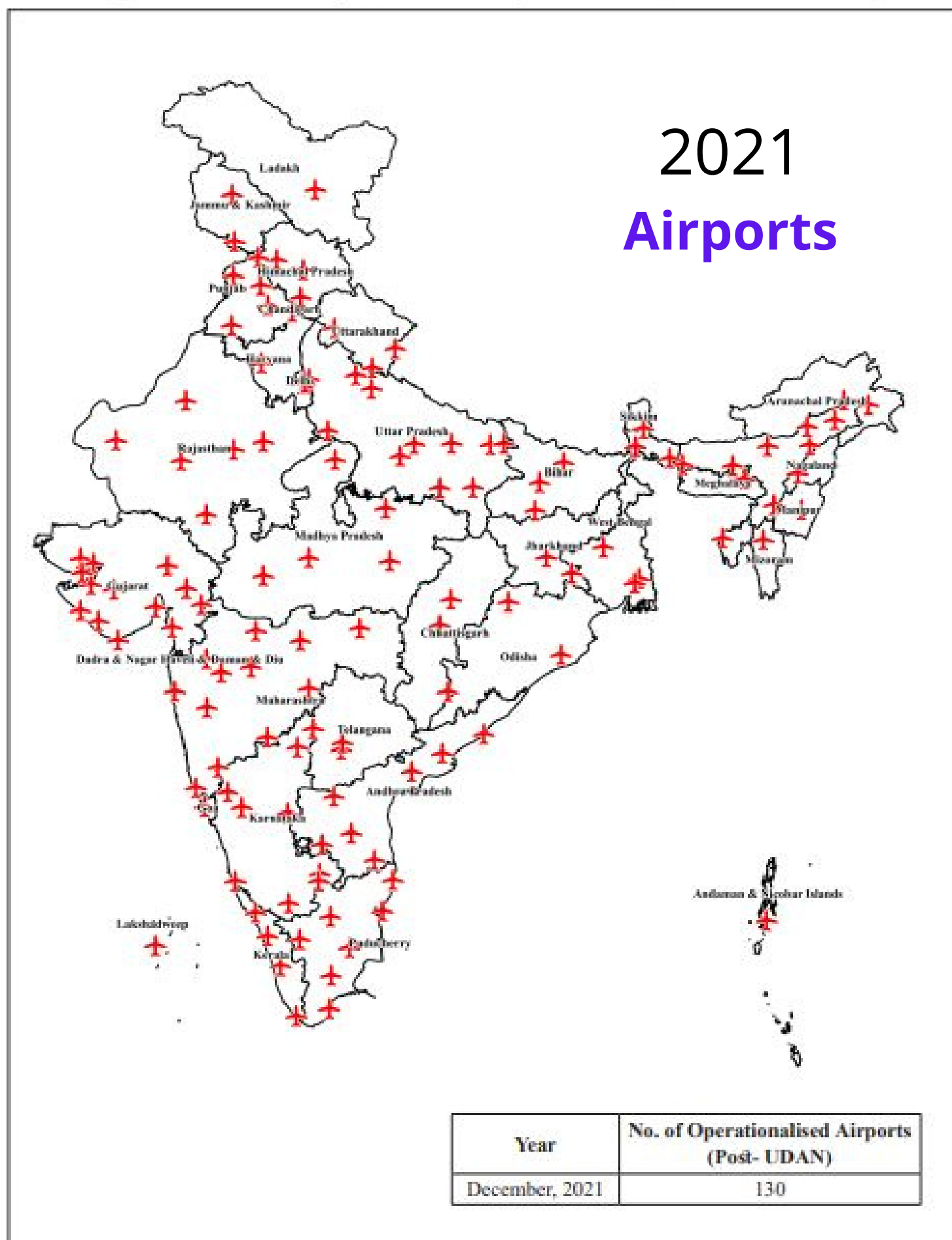
Source: Ministry of Road Transport and Highways, MapmyIndia

Figure 3A: Number of Operationalised Airports in India (As of November 2016)



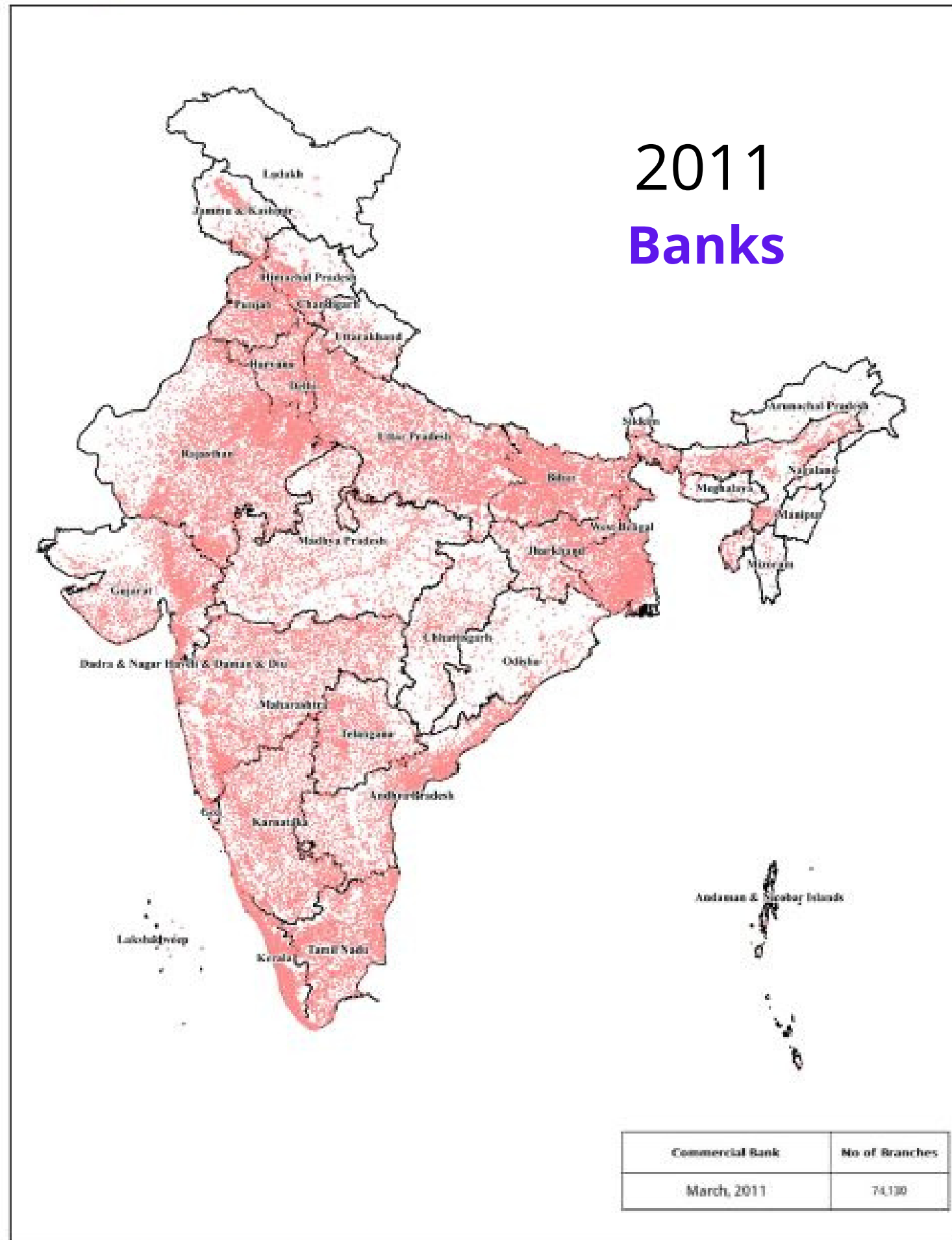
Source: Ministry of Civil Aviation, MapmyIndia

Figure 3B: Number of Operationalised Airports in India (As of December 2021)



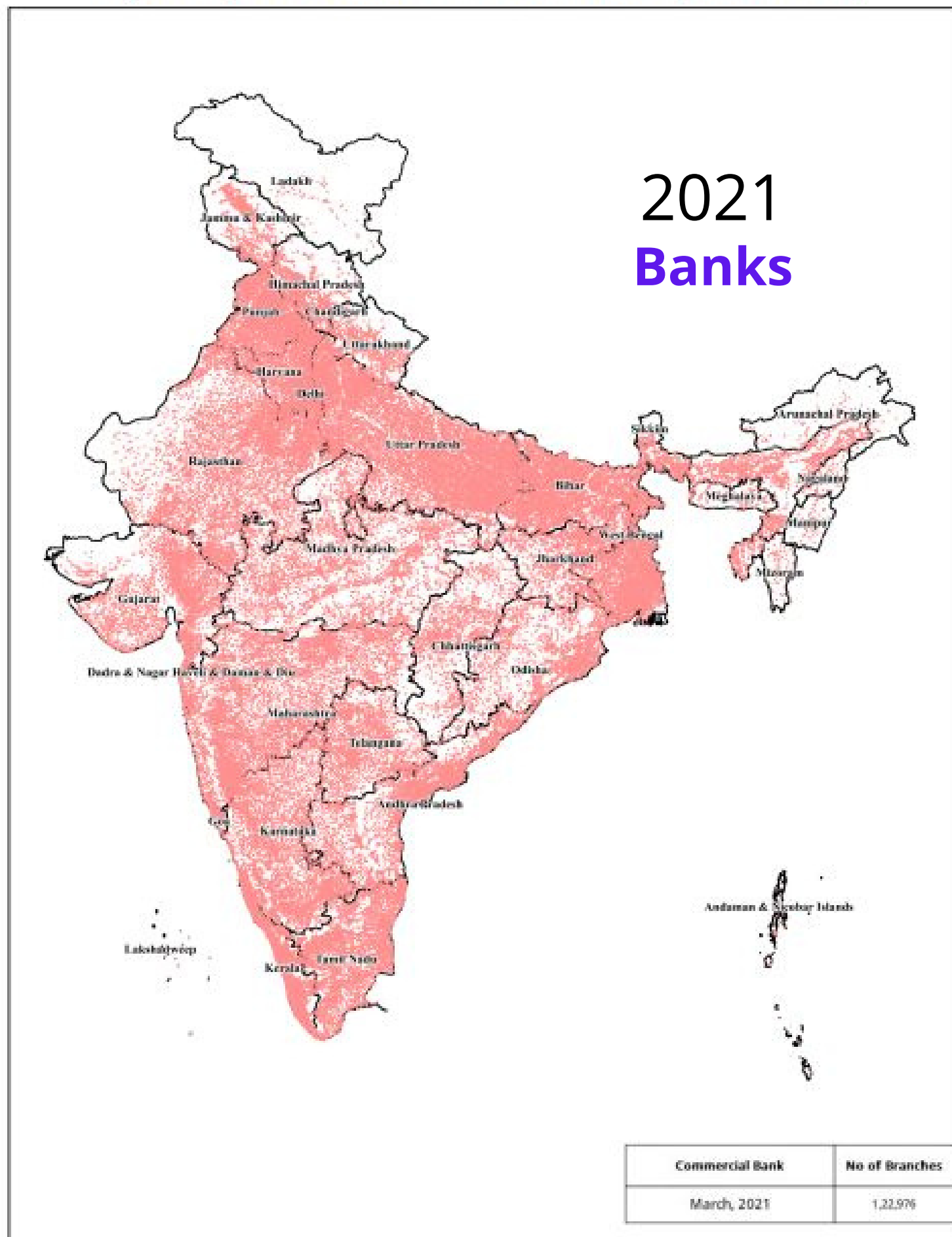
Source: Ministry of Civil Aviation, MapmyIndia

Figure 4A: Spread of Commercial Bank Branches in India (As of March 2011)



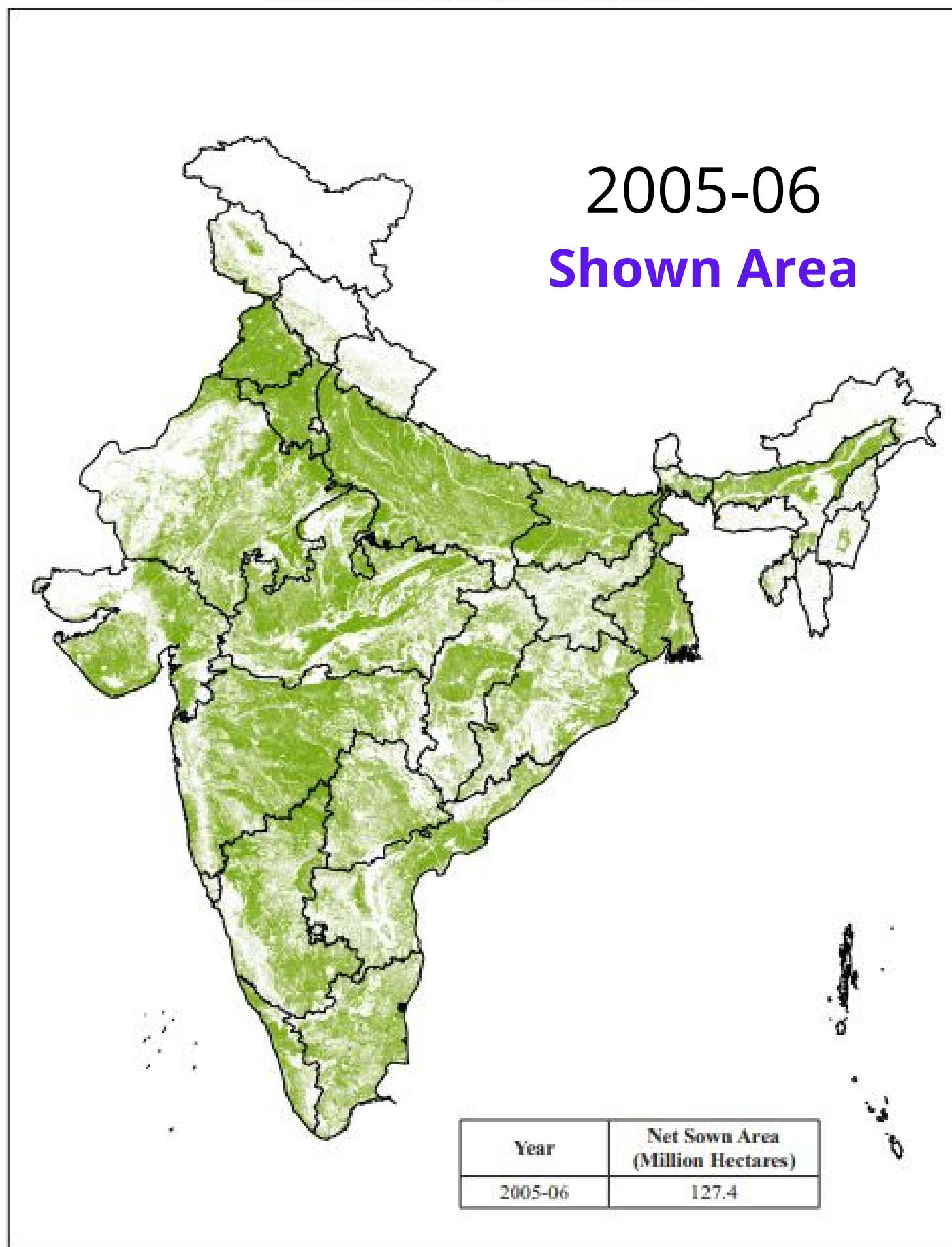
Source: Reserve Bank of India, MapmyIndia

Figure 4B: Spread of Commercial Bank Branches in India (As of March 2021)



Source: Reserve Bank of India, MapmyIndia

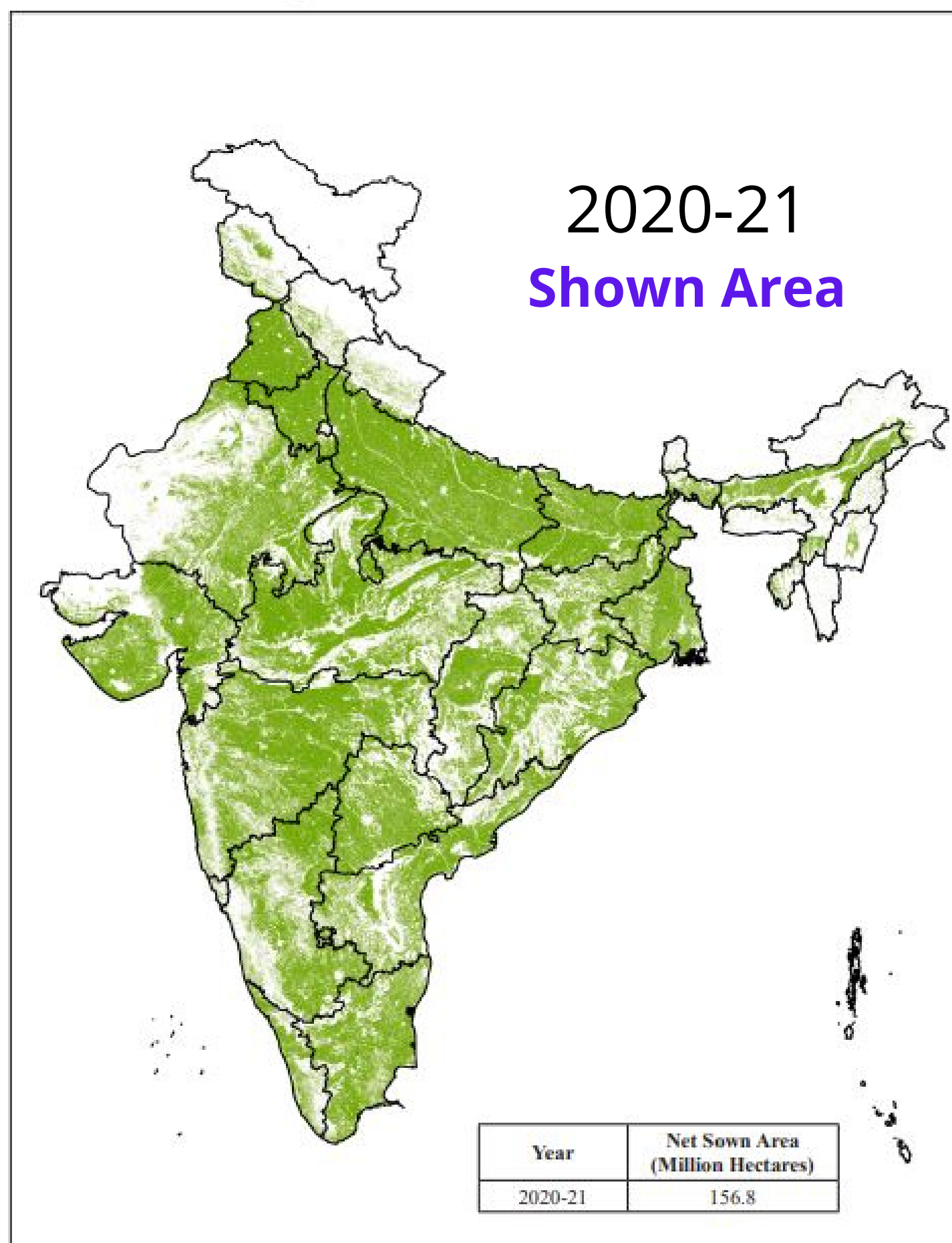
Figure 5A: Net Sown Area in India, 2005-06



Source: Indian Space Research Organisation (ISRO)

Note: The net sown area includes the extent of crops, medicinal crops, plantations, vegetables, floriculture and orchards during Kharif, Rabi and Zaid seasons. It is estimated using multi-temporal AWiFS sensor data aboard Resourcesat-1/2 satellites

Figure 5B: Net Sown Area in India, 2020-21



Source: India Space Research Organisation (ISRO)

Note: The net sown area includes the extent of crops, medicinal crops, plantations, vegetables, floriculture and orchards during Kharif, Rabi and Zaid seasons. It is estimated using multi-temporal AWiFS sensor data aboard Resourcesat-1/2 satellites